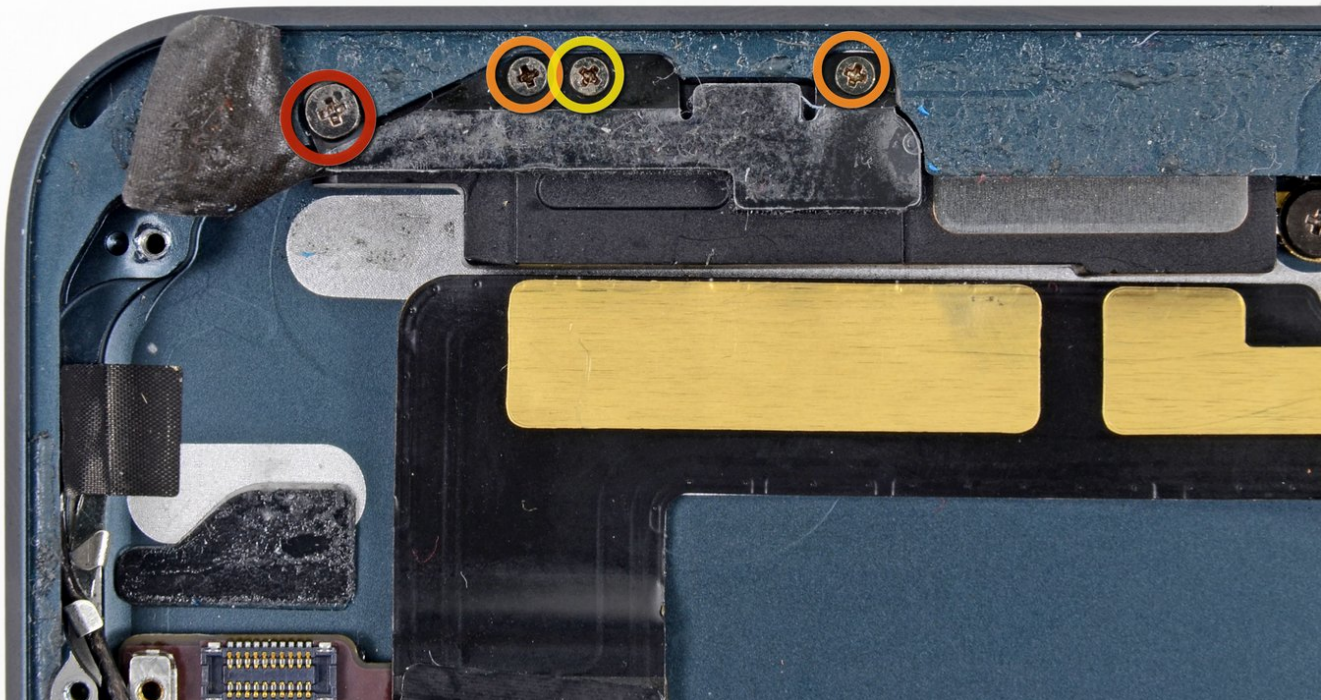




iPad Mini CDMA GPS Antenna Replacement

Prereq for removing logic board. Battery is out.

Written By: Walter Galan



INTRODUCTION

Prereq for removing logic board. Battery is out.



TOOLS:

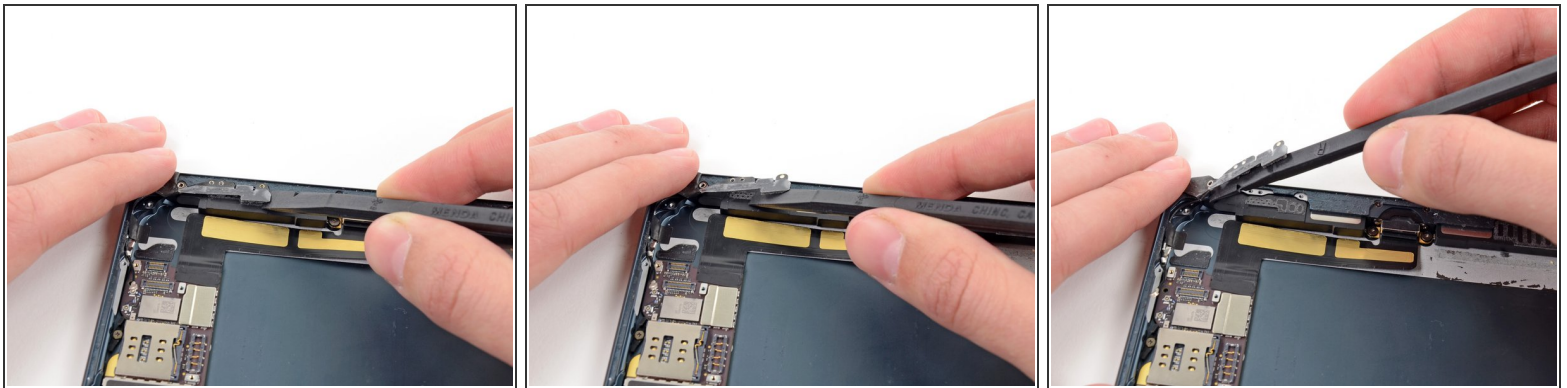
- [Phillips #00 Screwdriver](#) (1)
 - [Spudger](#) (1)
-

Step 1 — GPS Antenna



- Remove the following screws:
 - One 2.5 mm Phillips #00
 - Two 1.1 mm Phillips #00
 - One 1.2 mm Phillips #00

Step 2



- Use the flat end of a spudger to loosen the foam adhesive holding the antenna to the right speaker.

To reassemble your device, follow these instructions in reverse order.